



TelcoTrek



**GenWATCH3™ is a Control Channel decoder for SmartNet and SmartZone systems.
It can store up to 1 year (or more) of data for detailed reporting.**

Monitor the health of your channels.

Contains Licensed Motorola Technology.

For a fully functioning, 60-day demo of GenWATCH3™, click [here](#)

We can tailor a webinar to your needs.

**You and all your team, engineers, salesmen and administrative
can join in and view the webinar.**

**For more detail or technical specifications on these and other products please contact us at
info@telcotrek.com, or by phone in the United States at 772 905 3123,
and in Latin America in Venezuela at 212 265 5673.**

TelcoTrek, Inc. is the full line distributor in Latin America and the Caribbean for The Genesis Group.

Executive Summary



GenWatch3® is feature rich! In fact, it is the most powerful software on the market that can listen to a 3600 baud Motorola Control Channel, decode it, store it, report it, watch it, alarm it and a few more things. Each feature and module can be purchased separately or in some cases, as part of a package of features. All existing capabilities that are in Motorola 3600 Network Management Products, and more, have been incorporated into GenWatch3®.

Innovative Design

Modern, Creative Interfaces like – GenWatch3 GroupView and Launchpad. We have taken an approach that engineering and technical software should not be boring! We use ultra modern and safe programming techniques to display highly technical information in a way that makes sense. This is the classic PTT viewing screen, with a great twist.



Powerful Security

From the GW3 Security Configuration interface, you can create "roles" such as supervisor, day shift, technician, etc. In the roles, you assign what modules and features within those modules that the role can access. You then add users (the actual people that will use GW3) and assign a role to them. You can also create data filters where only certain Talkgroups can be viewed by certain people. Also, from the Security Configuration, with proper permission, you can monitor user activity, module activity, and more.



Completely Modular

GW3 was designed and built in a way that it is simple to customize to your needs. You do not have to pay for unwanted or unnecessary features. And, you can add features later, as we create them or as your budget allows. It is about as future proof as you can get!



Alias Manager, Systems

This is a great place to mention that GW3 can take input from MULTIPLE RF Modem/RIMs. This means that from one GW3, you can watch and record all Control Channel activity. You can also set an Alias for each system



All Activity Window

It is a filterable and colorable view of all Control Channel data packets that come through. You can elect to see every minute piece of information or only the pieces that you want to watch. You can color each type of data packet to help you identify diagnostics, affiliations or anything you wish. You can pause the display and then tell it to resume. All in all, this one window has the power to tell you everything you need to know about your system, the instant that it happens. The Core bundle comes with one 'instance' of this module. You can easily license more copies of the All Activity Module that can be viewed from other computers.



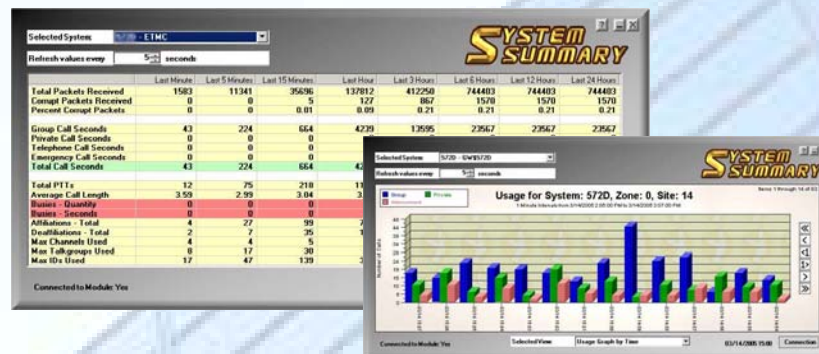
GenWatch3™ Executive Summary



MODULES:

System Activity Summary

This screen will quickly show the most important statistics about your system in the last minutes, last 15 minutes, last hour, last 3 hours, last 6, 12 and 24 hours. There is a simple way to capture this screen and print it too. All of the detailed data is also stored for you to report on, after the fact. Inside System Summary are many graphing variations that are dynamically updated every minute (adjustable).



Affiliation Monitor

Being able to KNOW the most recent Talkgroup that a particular radio is affiliated with can be challenging. The GW3 Affiliation module makes it child's play. There are three basic screens, from which you can know everything about radio affiliation: by Talkgroup, by Search, by History.



Archive Module

Archives control channel data to SQL databases. Storage length is limited to hard drive space available.

Activity by Talkgroup with Emergencies

Talkgroup dispatch call activity, one TG per sizable and colorable window. Includes the GW3 Alias Database Manager. Interface that shows Talkgroup based dispatch call activity, most recent activity for any open Talkgroup window, Emergency display, short term logging and alerts. Optionally, a setting can be changed to turn this window into simple basic Talkgroup based PTT activity window that can be resized. Each pane can be also sized and colored and all fonts can be changed. Fill the window with as many Talkgroups as you can fit, based on their individual size. The Emergency display can still be visible.

Any further information on these or any other additional modules, please contact TelcoTrek's sales representative.

GW3 REQUIREMENTS: RF-modem + RIM II